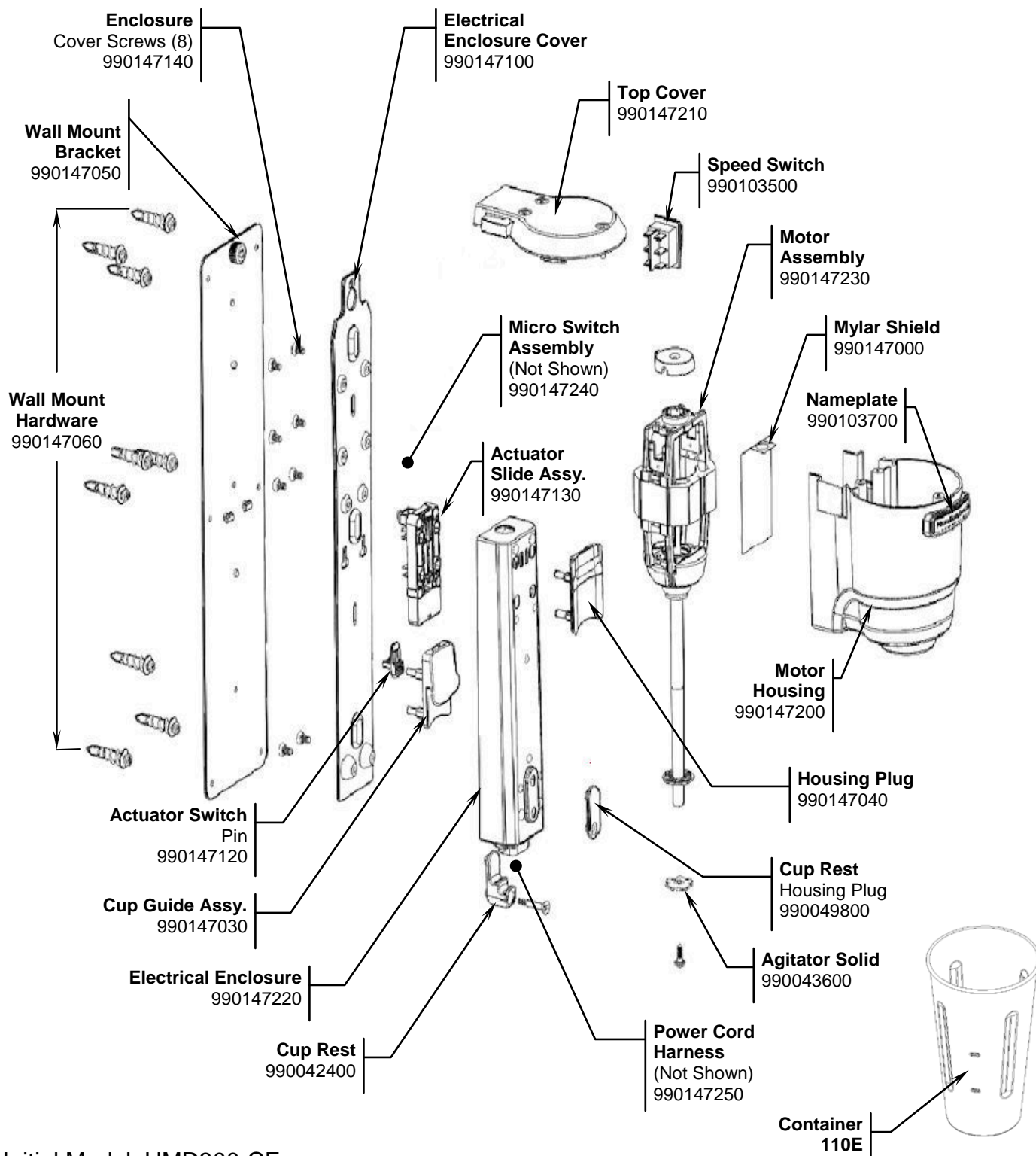



Replacement Parts Diagram

PROPRIETARY RIGHTS NOTICE This document and all information contained within it is the property of Hamilton Beach Brands, Inc. (HBB). It is confidential and proprietary and has been provided to you for a limited purpose. It must be returned or destroyed upon request. Disclosure, reproduction or use of this document and any information contained within it, in full or in part, for any purpose is forbidden without the prior written consent of HBB. No photographs may be taken of any article fabricated or assembled from this document without the prior written consent of HBB.



Initial Model: HMD300-CE

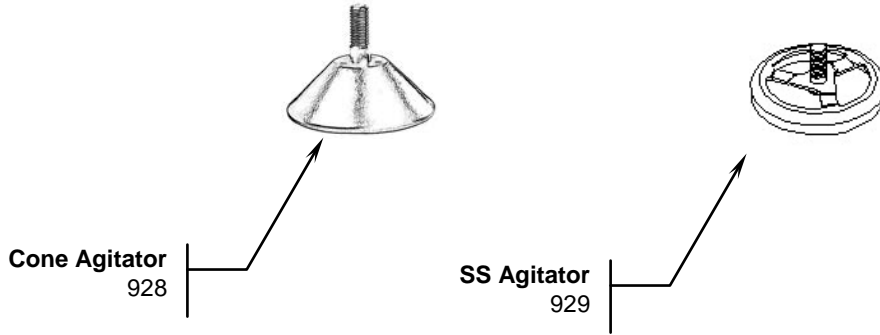
Printed Circuit Board 99016700 – Not Shown

 Hamilton Beach 4421 Waterfront Drive Glen Allen, VA 23060	Revision Description:	Update Parts					
	Request Number:	DOC4025	Revision Date:	09/09/13	Approved by:	DOC4025	
	Issue Code(s):	L	Page:	1 of 2	Document #:	510029100	Rev:

Replacement Parts Diagram

PROPRIETARY RIGHTS NOTICE This document and all information contained within it is the property of Hamilton Beach Brands, Inc. (HBB). It is confidential and proprietary and has been provided to you for a limited purpose. It must be returned or destroyed upon request. Disclosure, reproduction or use of this document and any information contained within it, in full or in part, for any purpose is forbidden without the prior written consent of HBB. No photographs may be taken of any article fabricated or assembled from this document without the prior written consent of HBB.

Accessories



4421 Waterfront Drive Glen Allen, VA 23060	Revision Description:		Update Parts					
	Request Number:	DOC4025	Revision Date:	09/09/13	Approved by:	DOC4025		
	Issue Code(s):	L	Page:	2 of 2	Document #:	510029100	Rev:	B